



Flow Measurement & Control

CONTOIL® Classic Mechanical Oil Meters 9204 & 9208

9204 and 9208

Technical data 1)



- oil meter with internal threaded connections located on the bottom plate
- with mechanical roller counter, volume display in litres
- meters in US-Gallons ²⁾
- for mounting in horizontal, vertical and inclined positions
- VZOA 4 and 8 with EEC legal verification

Option: Reed pulser 48 V

9204		9208	
Nominal diameter	inch (mm)	1/8 (4)	1/4 (8)
Connection threads of meter	inch	1/8	1/4
Nominal pressure with threaded ends (PSI)	PSI	363	363
Maximum temperature T _{max} ,	° F	140	140
Maximum flow rate Q _{max} 3)	gph (l/h)	21 (80)	52 (200)
Nominal flow rate Q_{cont} 3)	gph (l/h)	13 (50)	35 (135)
Minimal flow rate Q _{min}	gph (l/h)	.26 (1)	1 (4)
Approx. starting flow rate	gph (l/h)	.1 (.4)	.42 (1.6)
Max. permissible error		± 1% of actual value	
Repeatability		± 0.2%	
Safety filter mesh size	mm	0.125	0.125
Dirt filter mesh size	mm	0.080	0.080
Housing finish		Clear Plastic	
Weight without couplings	lbs (kg)	1.4 (.65)	1.6 (.75)
Smallest readable amount:	g	0.001	0.001
Registration capacity	g	10000	100000
Registration time at Q _{cont} until roll over	h	7140	28570
Outputs 5)			
Reed pulsers	10 ppg	9205	
Optional High Speed Pulser	1216 ppg		9209

1) Manufacturer's specification, valid for the reference conditions as specified under "APPENDIX: Meter data".

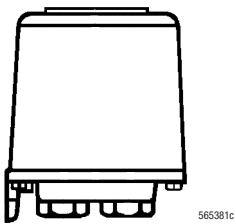
2) 1 US gallon corresponds to 3.785 litres

3) For burners and engines or motors, the meter must be selected on the basis of the permanent flow rate. For higher viscosities, or if the meter is installed on the suction side, the pressure drop and any reduction in the measuring range must also be taken into consideration.

4) Max. permissible error: VZOA 4 Q_{min} 0.5: 0.5 l/h ... 2 l/h = + 1%/- 2%. VZOA 8: 1 l/h ... 2 l/h = + 1%/- 2%.

5) Note: pulses of short duration!

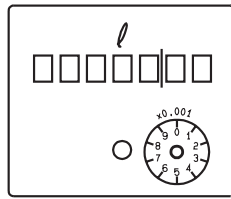
Dimensions



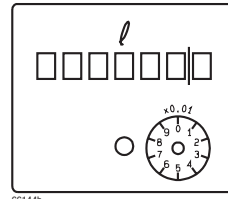
height = 3"
width = 2.5"
depth = 2.5"

Dial

9204

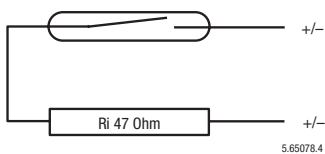


9208



Detailed dimensional drawings in "APPENDIX: Meter data"

Pulsers



Switching element:
Switching voltage:
Switching current:
Quiescent current:
Switching power:
Temperature:
Protection class:

- Reed switch with dry contact (inert gas)
- Max. 48 V AC/DC
- Max. 50 mA
- Open Contact
- Max. 3 VA
- Ambient -10 ... +60° C

Meters without pulser:

- IP 65 (IEC 60529) against water-jets and dust

Meters with pulser RE:

- IP 50 (IEC 60529) against dust deposits
- On plug supplied with product for cable, 2 × 0.35 mm²

Connections:

ISTEC
Flow Measurement & Control

ISTEC CORPORATION
5 Park Lake Road, Sparta, NJ 07871
973 383 9888 (Phone)
973 383 9088 (Fax)
Email: sales@istec-corp.com
Web: www.istec-corp.com